

502
13
14
15
16
17
18

Bühnenversätze

MC
287
288
289
290
291
292

2. Gl. Galerie

MC
539
538
537
536

2. Gl. Galerie

525
276
275
274
273
272
271

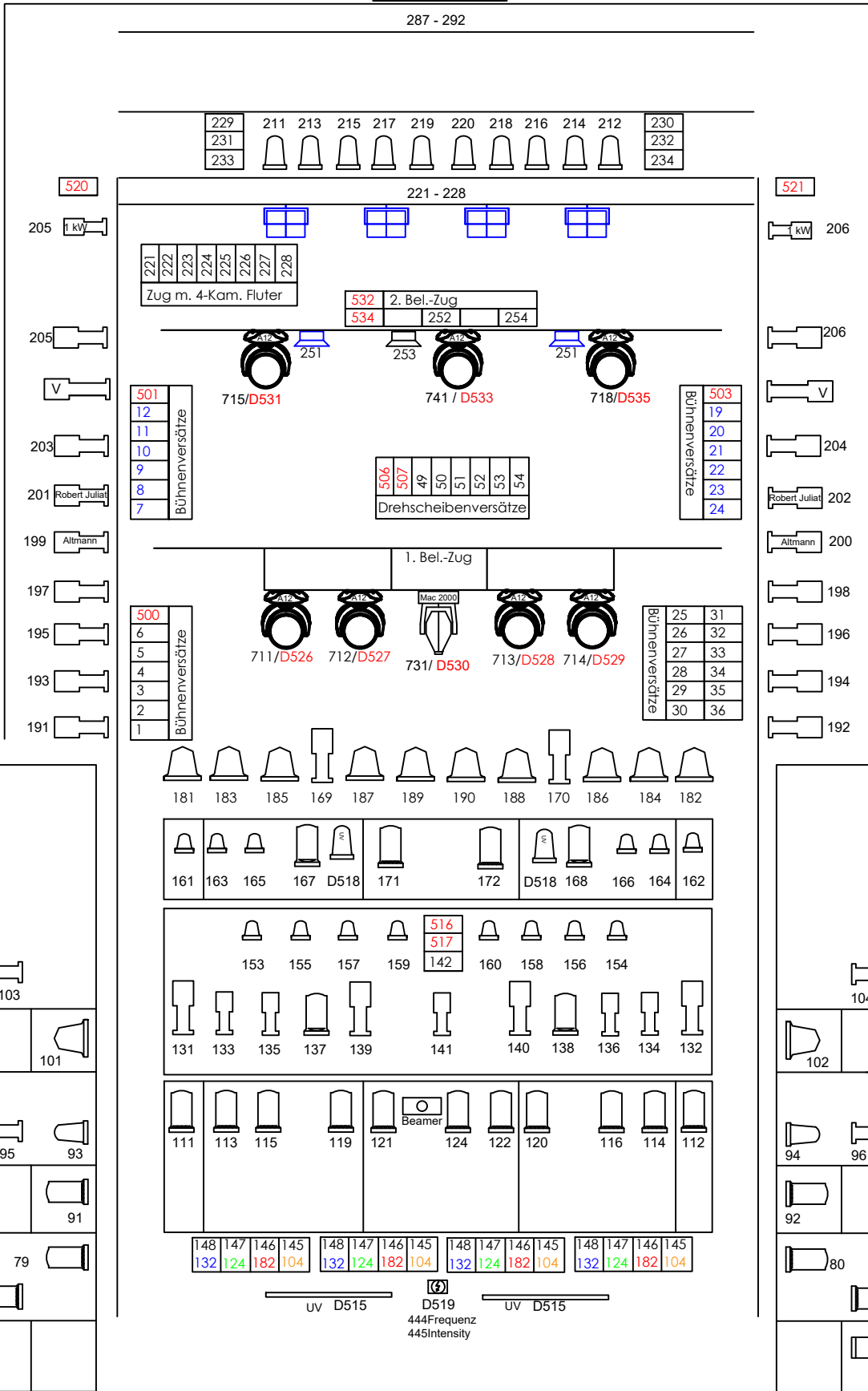
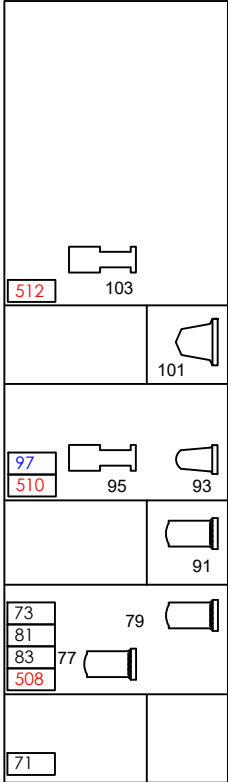
2. Galerie links

MC
281
282
283
284
285
286

MC = Multifocore

524
266
265
264
263
262
261

2. Galerie links



521
206
206
206
204
202
200
198
196
194
192

# Scheinwerferplan Vogtlandtheater Plauen / Bühnenhaus Stand 09.2019

MAC 500 4-Kammerrampe 4 x 400W

MAC 600 MAC 2000 P7 Spot A12 LED-Wash PAL 1200 Stroboskop

NV 500W NV 1000W NV 200 UV Fluter

HPZ 1 kW 15/35° HPZ 1 kW 25/45° HPZ 2 kW 15/35° HPZ 2 kW 25/45° ETC 750 W

HS 2000 HS 1000 HS 500 HMI

HP 2000 HP 1000 HP 500 PAR 64

Halofluter sym. 1000 W Halofluter sym. 500 W Halofluter asym. 750 W UV-Rampe LSL 1,2m